

## ESD Protected Area Entry System (Standalone)

### *61-500-00xx Contact & Contactless versions*

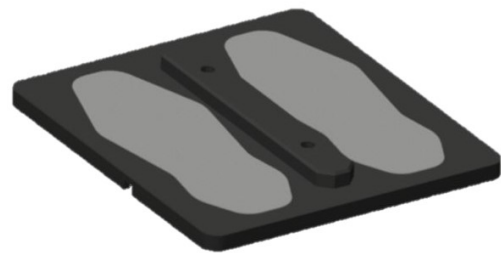
#### Mechanical characteristics

- Size of the chassis: L 345 x l 222 x H 130 mm
- Weight: 4.3 kg
- Chassis material: ESD paint steel



#### Electrical characteristics

- Power supply 240 V<sub>AC</sub> ±10% / 50Hz
- Output Dry contact: 2 A, 30 VDC  
0.5 A, 60 VDC  
0.3 A, 125 VAC

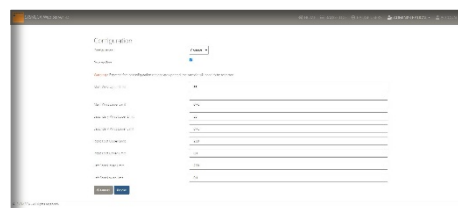


#### Measurement

- Contactless measurement
- Measurement: <2 sec (without RFID option)
- Tested equipment: Shoes **or** dual wire wrist.
- Measure under ± 10 V<sub>DC</sub>
- Test Ranges:
  - Wrist: 750 KΩ to 35 MΩ
  - Shoes: 100 KΩ to 200 MΩ
- Test result visualisation: - left and right shoes, wrist  
For the contactless version: Both shoes simultaneously or the dual channel bracelet
- Tested equipment & test ranges fully configurable by software

#### Software utility

- Test Measure
- Equipment configuration
- Hardware diagnostic



#### Conformity

CE certified  
ROHS directive  
2014/35/UE directive– Low tension  
2014/30/UE directive– Electromagnetic compatibility



**Warranty:** 2 years

**Calibration:** The tester is calibrated upon delivery and must be calibrated every year

## RFID version

This product is similar to the standard version with following additional functions allowing individualizing the access granting thanks to RFID identification and historizing the activity (measures and access)

## Individualized access granting

RFID reader compatible with most of HID cards\*

\*Wiegand 26 bits by default (others on request)

## Additional software utilities:

### Test log (100 000 records)

- User ID
- Type of test performed
- Global test result (PASSED/ FAILED)
- Date and hour
- Measure value for each equipment (wrist, shoes...)
- Tester ID

### User profile (50 000 records)

- RFID badge number
- Equipment to be tested

Ethernet connection to LAN needed (ntp service) for allowing the loading of:

- the user profiles
- the tests logs
- the timestamp

Badge ID	Main Wrist	Secondary Wrist	Right Foot	Left Foot	Status	Log Time	Badge user
000000005dca079	-1	-1	-1	-1	MEASURE_ID	Jul 10, 2020, 10:04:03 AM	piet piet
000000005dca079	-1	-1	-1	-1	MEASURE_ID	Jul 10, 2020, 9:58:01 AM	piet piet
00000000400307a	145207	198693	543905	55680094	MEASURE_OK	Jul 8, 2020, 2:52:22 PM	nicolas
00000000400307a	1464498	198697	542705	55680094	MEASURE_OK	Jul 8, 2020, 3:52:08 PM	nicolas
00000000400307a	0	0	0	0	MEASURE_TIMEOUT	Jul 8, 2020, 5:51:37 PM	nicolas
00000000400307a	0	0	0	0	UNKNOWN_BADGER	Jul 8, 2020, 5:51:19 PM	nicolas

## References

### ESD protected area entry system

61-500-0018	ESD TESTER Standard
61-500-0019	ESD TESTER Standard RFID
61-500-0020	ESD TESTER Standard RFID contactless
61-500-0021	ESD TESTER Standard contactless
84-150-3033	ESD TESTER Shoe plate

## Installation and Technical services

Our technical service centre provides calibration of equipment.

General overview

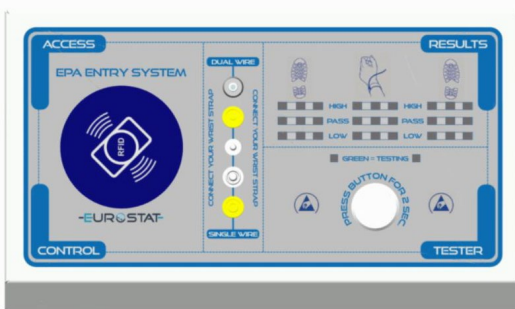


Tabletop

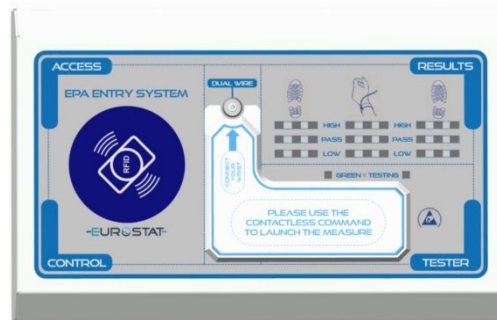


Wall mounting

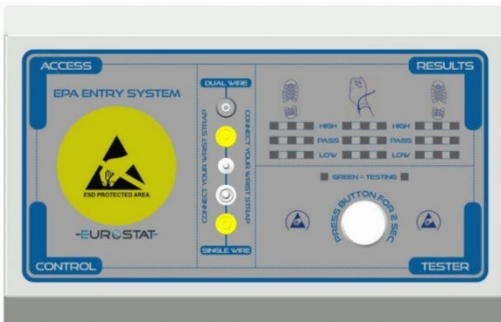
Front Panel



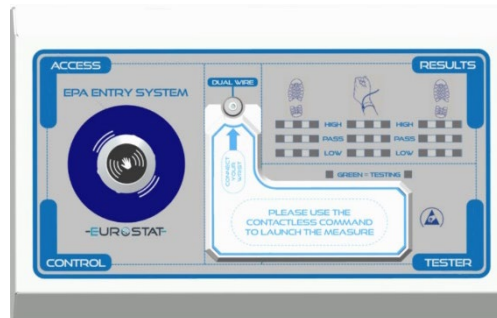
RFID contact



RFID contactless



STD contact



STD contactless

Outline dimensions

